

LOW PRICE & SIMPLE TO INSTALL

STATION BOX®

CLASSIC

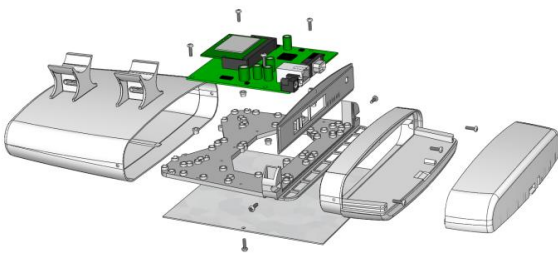
Universal Outdoor Enclosure

Product Datasheet



StationBox® is a universal enclosure designed for outdoor installations. StationBox® is made of durable plastic and it consists only of 4 parts. Design is very simple, with emphasis on its functionality.

STATIONBOX CONTENTS



SMART & EASY MAINTENANCE

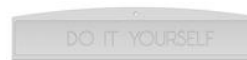
During the maintenance operations, the Top cover remains on its position on a pole or console. This ensures, that the direction to the opposite side of the link remains untouched.



STANDARD BACK PANELS



DIY OPTION FRONT PANEL



Downloadable file

MOUNTING OPTIONS



Standard Cable Ties

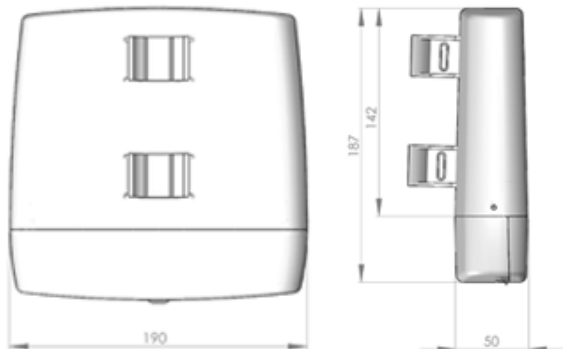


Nanobracelet
Compatible



STATION BOX®

CLASSIC



SUPPORTED PCBs

| | |
|---------------|---|
| Mikrotik | RB411, RB411A, RB411AH, RB711 |
| Wline | W3000G, W4000Gv4, W3000GLX |
| Compex | WP54AG, WP54G |
| Wiligear | WBD111, WBD500 in both possible to install 2 boards in 1 StationBox |
| Airlive | WL5460AP, WL5470AP, WLA9000AP |
| Alfa networks | W610 |
| CC&C | WA-2204A |

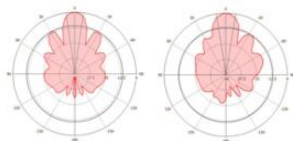
TECHNICAL DATA

| | |
|-----------------------|--|
| Material | UV stabilized and weather resistant ABS plastic |
| Flame Rating | UL 94 HB |
| Mounting Diameter | 40mm |
| Operating Temperature | -30 to +60°C |
| Wind Survival | 120km/h |
| Weight | 0.6 kg / 1.32 lbs – single piece incl. package 6 kg / 13.2 lbs – per Box |
| Single Piece | Brown box / 22.5 × 20 × 10.5 cm |
| 10pcs per Box | Carton Box / 55 × 49 × 23 cm |

FEATURES

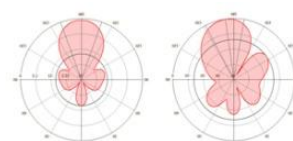


ANTENNAS



SBX520 Directional 5GHz 20dBi

Frequency Range: 4900-6100MHz
Gain: 20dBi (5,45-5,85GHz)
Polarization: Single, Horizontal or Vertical
Horizontal Beam Width: 15,4°
Vertical Beam Width: 16,6°
Impedance: 50Ohm
Max. Input Power: 2W
VSWR: max 1,5
Antenna Connector: MMCX



SBX2414 Directional 2,4GHz 14dBi

Frequency Range: 2400-2480MHz
Gain: 14dBi
Polarization: Single, Horizontal or Vertical
Horizontal Beam Width: 26°
Vertical Beam Width: 29°
Impedance: 50Ohm
Max. Input Power: 2W
VSWR: max 1,5
Antenna Connector: MMCX