

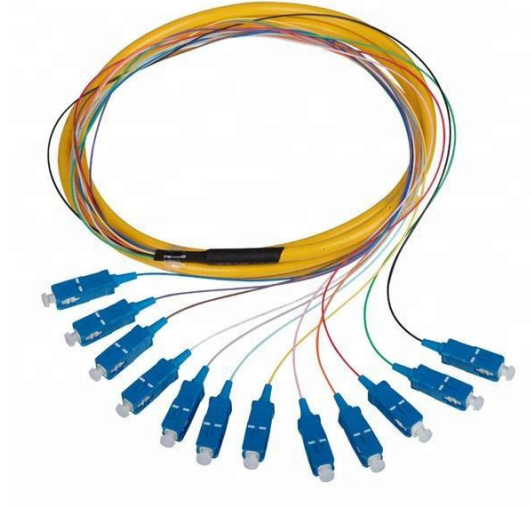
**RIBBON FAN-OUT PATCH CORD
SPECIFICATION**



Description

Ribbon fan-out patchcord provide a stable and reliable connection for single mode fiber. PC,UPC and APC is optional.

- 1.Low insertion loss.
- 2.High return loss.
- 3.High stability and reliability.



Performance

Item	Unit	Specification							
		FC/PC	FC/UPC	FC/APC	SC/PC	SC/UPC	SC/APC	ST/PC	ST/UPC
Insertion Loss	dB	≤0.20							
Max. Insertion Loss	dB	≤0.30							
Repeatability	dB	≤0.10							
Changeability	dB	≤0.20							
Return Loss	dB	45	50	60	45	50	60	45	50
Operation Temperature	°C	-40 ~ +80			-25 ~ +70			-40 ~ +80	
Storage Temperature	°C	-40 ~ +85							
Fiber type	um	9/125							
Core number		4,6,8,12 fibers							
Durability		> 1000 times							
Industry Standard		Bellcore TA-NWT-001209							

Application

- ◆ FTTH, LAN, PON & Optical CATV
- ◆ Local ring net
- ◆ Optical fiber communication system
- ◆ Optical fiber test equipment
- ◆ Optical fiber sensor

TUOLIMA[®]

