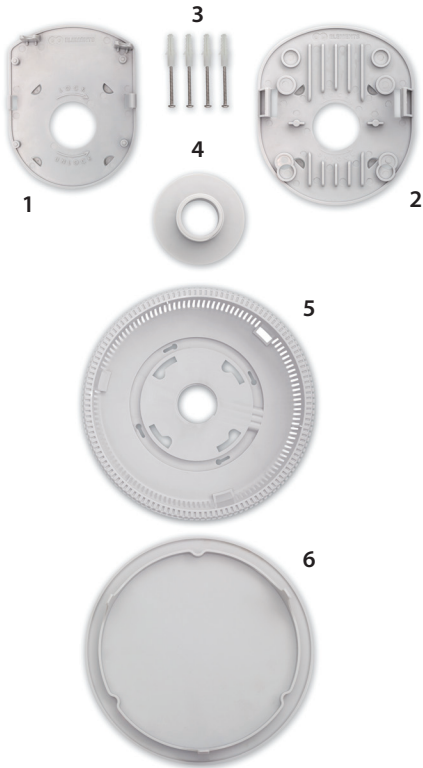


# StationBox® InSpot Quick Start Guide

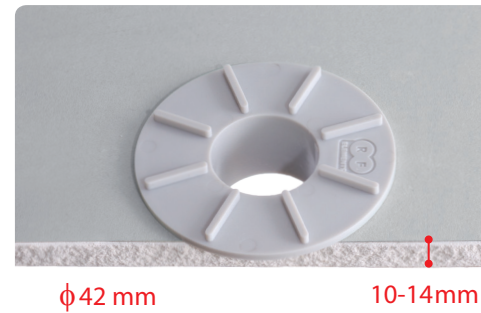
## Contents:



- 1 Mounting Bracket for RB411/RB711
- 2 Mounting Bracket for RB751/RB951
- 3 Screws and Wall Plugs
- 4 Plastic Screw
- 5 Body
- 6 Cover



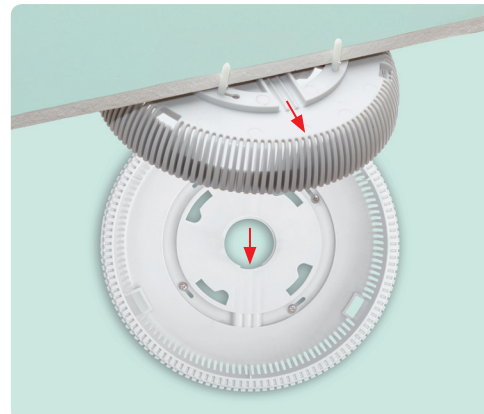
- 1 Open the enclosure by pushing three locks on the diameter. Remove the parts from inside. Remove the Plastic Screw.



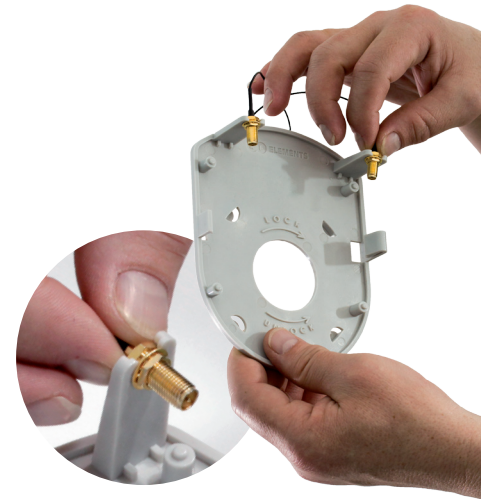
- 2 Installation into ceiling tile. Cut the circular hole of diameter approx. 42mm and place the Plastic Screw from inside of the tile.



- 3 Connect the Plastic Screw and the Body. The center hole is designed for cable access.



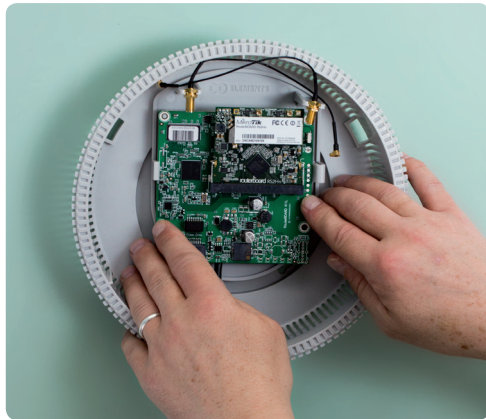
- 4 Installation on the Wall. Use four screws and wall plugs to mount the body directly on the wall. There are three troughs designed for cable access. Do not use the Plastic Screw.



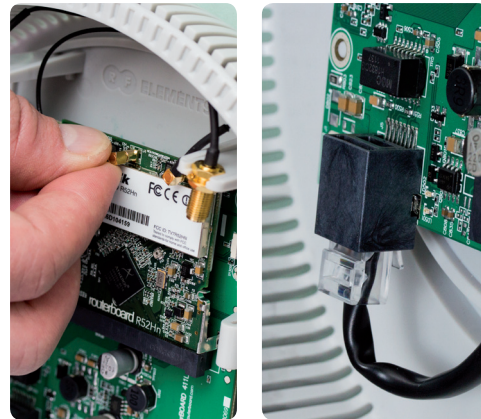
- 5 Install SMA-RP bulkhead pigtails on the Mounting Bracket.



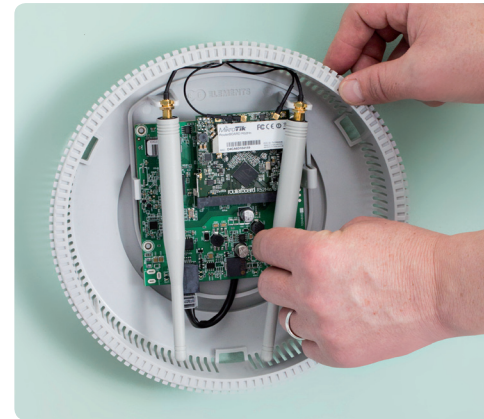
- 6 Attach the Mounting Bracket to the Body using bayonet lock.



7 Push and lock the RouterBoard.



8 Connect antenna pigtails and cables.



9 Install Antennas.



10 Close the cover. Three snap locks shall match the openings on the diameter of the Body.

## Installation with RB751/RB951



11 Attach the Mounting Bracket to the Body using bayonet lock. Don't forget to pass the cable(s).



12 Attach the RB751/RB951 to the Mounting Bracket by simple Push and Lock. Device feet shall match exactly to the sockets in the Mounting Bracket.



13 Connect all cables and close the Cover.