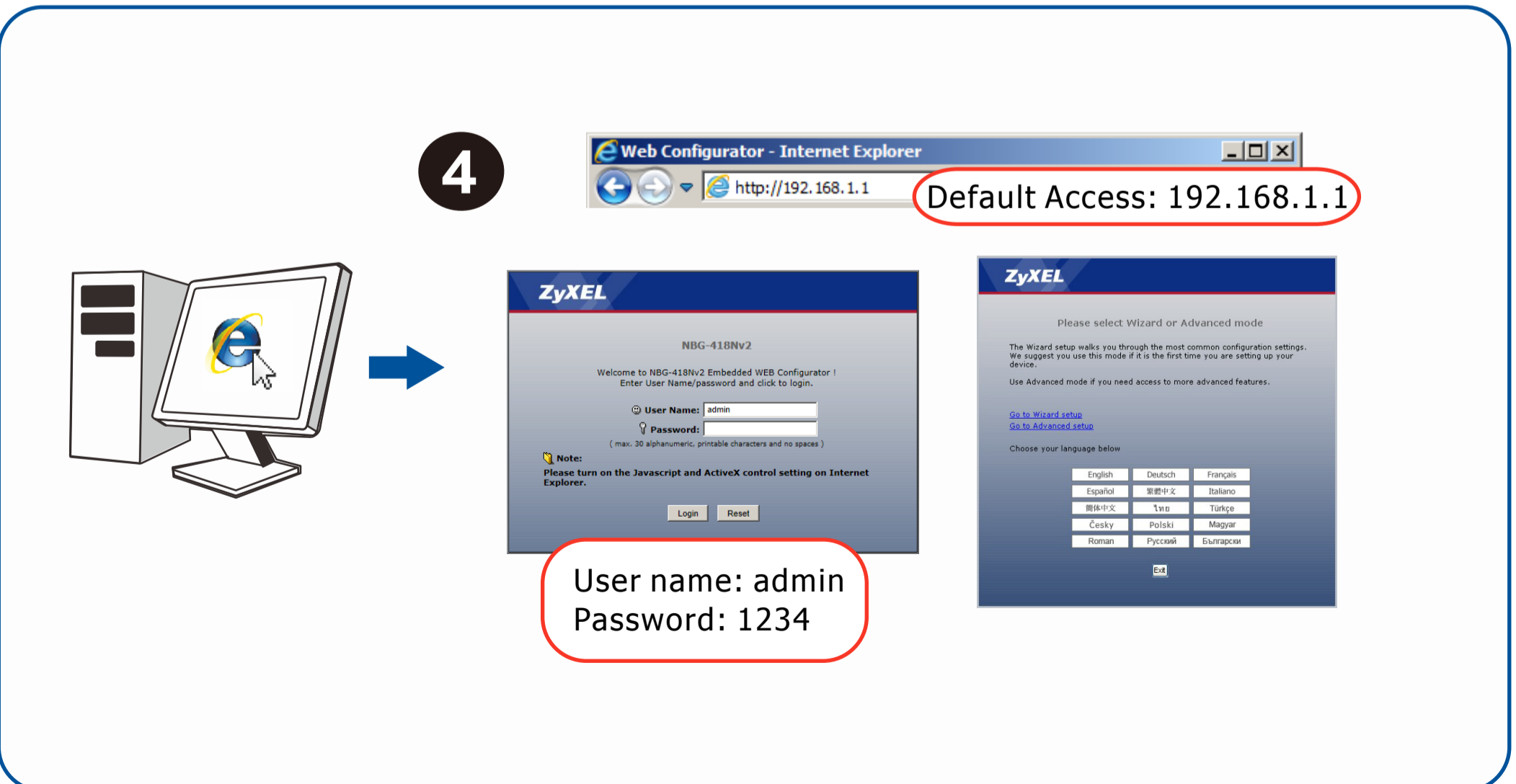
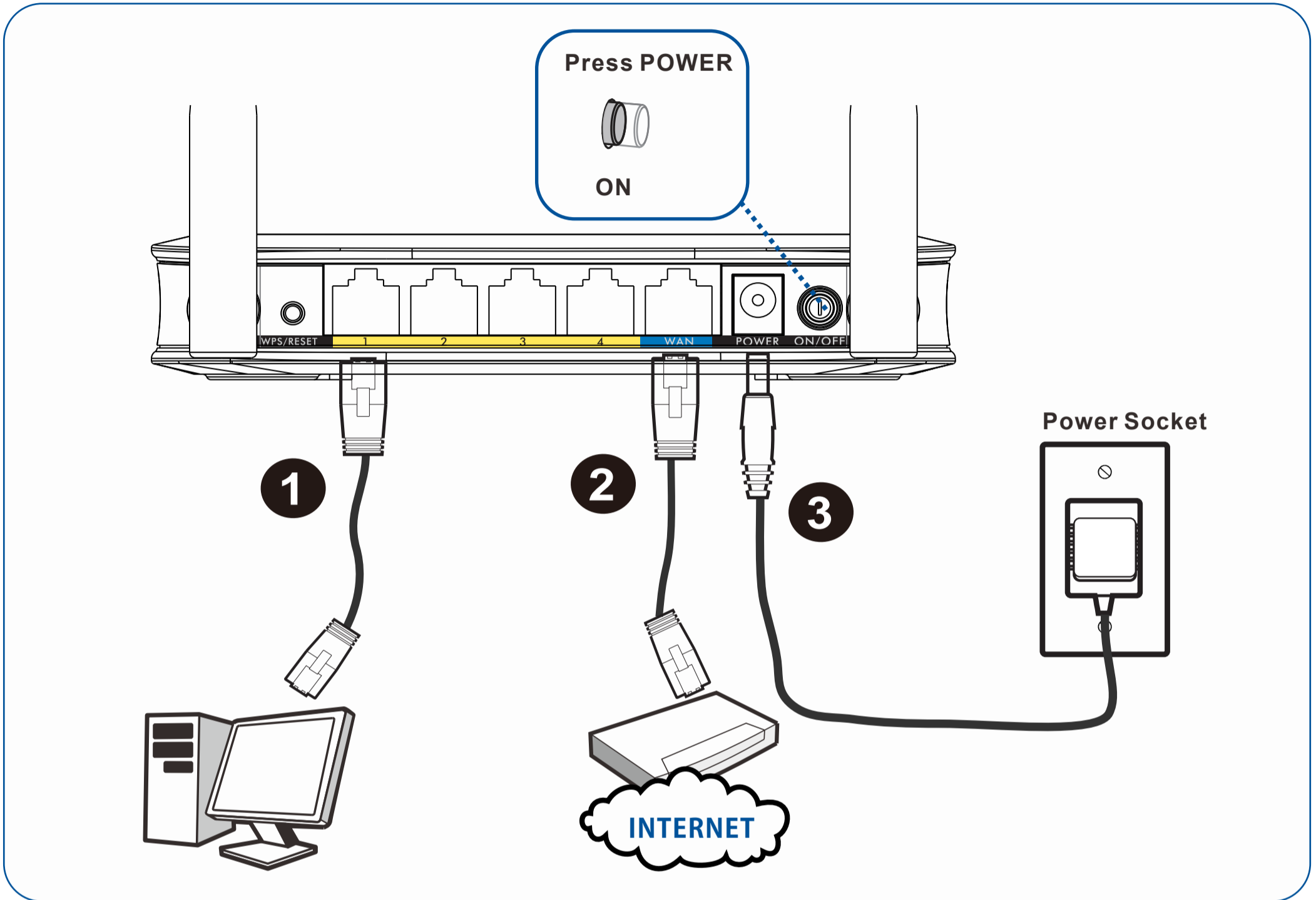


## Quick Start Guide

## NBG-418N v2 Wireless N300 Home Router



5

Wi-Fi Name (SSID): ZyXEL NBG-418N v2  
Network Key (Password): XXXXXXXX

Back Label

## WPS Setup (Optional)

WPS LED  
(2 to 3 seconds)  
5.1

(2 to 3 seconds)  
WPS  
5.2

5.1 + 5.2

Completed within

2  
Minutes

# Declaration

<p><b>Български (Bulgarian)</b></p> <p>Екологична продуктова декларация</p> <p>RoHS: Да/Не WEEE: Да/Не PFN: Да/Не REACH: Да/Не</p>	<p><b>Čeština (Czech)</b></p> <p>Environmentální prohlášení o produktu</p> <p>RoHS: Ano/Ne WEEE: Ano/Ne PFN: Ano/Ne REACH: Ano/Ne</p>	<p><b>Dansk (Danish)</b></p> <p>Miljøerklæring</p> <p>RoHS: Ja/Nej WEEE: Ja/Nej PFN: Ja/Nej REACH: Ja/Nej</p>	<p><b>Deutsch (German)</b></p> <p>Produkt-Umweltdeklaration</p> <p>RoHS: Ja/Nein WEEE: Ja/Nein PFN: Ja/Nein REACH: Ja/Nein</p>	<p><b>Eesti keel (Estonian)</b></p> <p>Toote keskkonnadeklaratsioon</p> <p>RoHS: Jah/Ei WEEE: Jah/Ei PFN: Jah/Ei REACH: Jah/Ei</p>	<p><b>English</b></p> <p>Environmental product declaration</p> <p>RoHS: Yes/No WEEE: Yes/No PFN: Yes/No REACH: Yes/No</p>	<p><b>Español (Spanish)</b></p> <p>Declaración Ambiental de Producto</p> <p>RoHS: Sí/No WEEE: Sí/No PFN: Sí/No REACH: Sí/No</p>	<p><b>Français (French)</b></p> <p>Profil environnemental de produit</p> <p>RoHS: Oui/Non WEEE: Oui/Non PFN: Oui/Non REACH: Oui/Non</p>	<p><b>Italiano (Italian)</b></p> <p>Dichiarazione ambientale di prodotto</p> <p>RoHS: Sì/No WEEE: Sì/No PFN: Sì/No REACH: Sì/No</p>	<p><b>Latviešu valoda (Latvian)</b></p> <p>Produkta vides ietekmējuma deklarācija</p> <p>RoHS: Jā/Nē WEEE: Jā/Nē PFN: Jā/Nē REACH: Jā/Nē</p>
<p><b>Lietuvių kalba (Lithuanian)</b></p> <p>Aplinkosaugos gaminio deklaracija</p> <p>RoHS: Taip/Ne WEEE: Taip/Ne PFN: Taip/Ne REACH: Taip/Ne</p>	<p><b>Magyar (Hungarian)</b></p> <p>Környezetvédelmi terméknyilatkozatot</p> <p>RoHS: Igen/Nem WEEE: Igen/Nem PFN: Igen/Nem REACH: Igen/Nem</p>	<p><b>Malti (Maltese)</b></p> <p>Dikjarazzjoni Ambjentali dwar il-Prodott</p> <p>RoHS: Iva/Lej WEEE: Iva/Lej PFN: Iva/Lej REACH: Iva/Lej</p>	<p><b>Nederlands (Dutch)</b></p> <p>Milieuproductverklaring</p> <p>RoHS: Ja/Nee WEEE: Ja/Nee PFN: Ja/Nee REACH: Ja/Nee</p>	<p><b>Polski (Polish)</b></p> <p>Deklaracja środowiskowa produktu</p> <p>RoHS: Tak/Nie WEEE: Tak/Nie PFN: Tak/Nie REACH: Tak/Nie</p>					
<p><b>Português (Portuguese)</b></p> <p>Declaração ambiental do produto</p> <p>RoHS: Sim/Não WEEE: Sim/Não PFN: Sim/Não REACH: Sim/Não</p>	<p><b>Română (Romanian)</b></p> <p>Declarație de mediu privind produsele</p> <p>RoHS: Da/Nu WEEE: Da/Nu PFN: Da/Nu REACH: Da/Nu</p>	<p><b>Slovenčina (Slovak)</b></p> <p>Vyhlasenie o environmentálnom výrobku</p> <p>RoHS: Áno/Ne WEEE: Áno/Ne PFN: Áno/Ne REACH: Áno/Ne</p>	<p><b>Slovenščina (Slovene)</b></p> <p>Okoljska deklaracija izdelka</p> <p>RoHS: Da/Ne WEEE: Da/Ne PFN: Da/Ne REACH: Da/Ne</p>	<p><b>Suomi (Finnish)</b></p> <p>Standardin perustulla ympäristövaikutustieto</p> <p>RoHS: Kyllä/Ei WEEE: Kyllä/Ei PFN: Kyllä/Ei REACH: Kyllä/Ei</p>					
<p><b>Svenska (Swedish)</b></p> <p>Miljöproduktdeklaration</p> <p>RoHS: Ja/Nej WEEE: Ja/Nej PFN: Ja/Nej REACH: Ja/Nej</p>	<p><b>Ελληνικά (Greek)</b></p> <p>Περιβαλλοντική δήλωση προϊόντος</p> <p>RoHS: Ναι/Όχι WEEE: Ναι/Όχι PFN: Ναι/Όχι REACH: Ναι/Όχι</p>	<p><b>Norsk (Norwegian)</b></p> <p>Miljøerklæring</p> <p>RoHS: Ja/Nei WEEE: Ja/Nei PFN: Ja/Nei REACH: Ja/Nei</p>							

**“INFORMAZIONI AGLI UTENTI”**

Ai sensi della Direttiva 2012/19/UE del Parlamento europeo e del Consiglio, del 4 luglio 2012, sui rifiuti di apparecchiature elettriche ed elettroniche (RAEE)

Il simbolo del cassonetto barrato riportato sull'apparecchiatura o sulla sua confezione indica che il prodotto alla fine della propria vita utile deve essere raccolto separatamente dagli altri rifiuti.

La raccolta differenziata della presente apparecchiatura giunta a fine vita è organizzata e gestita dal produttore. L'utente che vorrà disfarsi della presente apparecchiatura dovrà quindi contattare il produttore e seguire il sistema che questo ha adottato per consentire la raccolta separata dell'apparecchiatura giunta a fine vita.

L'adeguata raccolta differenziata per l'avvio successivo dell'apparecchiatura dismessa al riciclaggio, al trattamento e allo smaltimento ambientalmente compatibile contribuisce ad evitare possibili effetti negativi sull'ambiente e sulla salute e favorisce il riutilizzo e il riciclo dei materiali di cui è composta l'apparecchiatura.

Lo smaltimento abusivo del prodotto da parte del detentore comporta l'applicazione delle sanzioni amministrative previste dalla normativa vigente.

**安全警告**

為了您的安全，請先閱讀以下警告及指示：

- 請勿將此產品接近水、火焰或放置在高溫的環境。
- 避免設備接觸
- 任何液體、切勿讓設備接觸水、雨水、高濕度、污水腐蝕性的液體或其他水份。
- 灰塵及污物、切勿接觸灰塵、污物、沙土、食物或其他不適合的材料。
- 切勿阻礙設備散熱孔，並勿使用不正確的電源變壓器。
- 切勿阻礙設備的散熱孔，空氣對流不足將造成設備損壞。
- 請插在正確的電壓供給插座(如：北美/台灣電壓110V AC，歐洲是230V AC)。
- 假若電源變壓器或電源變壓器的線路損壞，請從插座拔除，若您繼續插電使用，會有觸電死亡的風險。
- 請勿隨意修理電源變壓器或電源變壓器的線路，若有損壞，請直接聯絡您購買的店家，購買一個新的電源變壓器。
- 請勿將此設備安裝於室外，此設備僅適合放置於室內。
- 請勿隨一垃圾丟棄。

**注意!**

依據 低功率電波輻射性電機管理辦法  
第十二條 經型式認證合格之低功率射頻電機，非經許可，公司、商號或使用者均不得擅自變更頻率、加大功率或變更原設計之特性及功能。

第十四條 低功率射頻電機之使用不得影響飛航安全及干擾合法通信；經發現有干擾現象時，應立即停用，並改善至無干擾時方得繼續使用。前項合法通信，指依電信規定作業之無線電信。低功率射頻電機須忍受合法通信或工業、科學及醫療用電波輻射性電機設備之干擾。

本機限在不干擾合法電臺且不受干擾保護條件下於室內使用，減少電磁波影響，請妥適使用。

請參閱產品背貼上的設備額定功率。  
請參考產品型錄或是彩盒上標示的作業溫度。

## Declaration of Conformity

**Product information**

Product Name : Wireless N300 Home Router  
Model Number : NBG-418N v2

**Produced by**

Company Name : ZyXEL Communications Corporation  
Company Add. : No. 2, Gongye E. 9th Road Hsinchu Science Park, Hsinchu, Taiwan

to which this declaration relates, is in conformity with the following standards or other normative documents:

EMC/RF EN 300 328 V1.8.1: 2012-06 EN 301 489-1 V1.9.2 (2011-09) EN 301 489-17 V2.2.1 (2012-09) EN 55022: 2010+AC: 2011 EN 61000-3-2: 2006+A1: 2009+A2: 2009 EN 61000-3-3: 2008 EN 55024: 2010	Safety : EN 60950-1: 2006+A11: 2009+A1: 2010+A12: 2011 ERP: EN 50563: 2011 RoHS 2 : EN 50581: 2012
--	---

The Product herewith complies with requirements of the following Directive :  
The Low Voltage Directive 2006/95/EC, The EMC Directive 2004/108/EC,  
The R & TTE Directive 1999/5/EC , The ErP Directive 2009/125/EC  
The RoHS Directive 2011/65/EU and carries the CE Marking accordingly.

The TCF-File is located at:  
Local contact for regulatory topics only :

Company Name : ZyXEL Communications Corporation  
Company Address : Hsinchu Office : No. 2, Gongye E. 9th Road Hsinchu Science Park, Hsinchu, Taiwan  
No. 6, Innovation Road II, Science-Park, Hsin-chu, 300  
Taiwan  
TAIPEI Office : 11F., NO.223, SEC. 3, BEIXIN RD., XINDIAN DIST., NEW  
TAIPEI CITY 23143, TAIWAN (R.O.C.)

Person is responsible for marking this declaration:

Raymond Huang	Assistant VP, Quality & Customer Service Division
Name (Full Name)	Position/ Title
2014-04-18	