

# Quick Start Guide

## PLA5206 v2

1000 Mbps Powerline 2-port Gigabit Ethernet Adapter



ZyXEL

ENGLISH | DEUTSCH | FRANÇAIS | ITALIANO |  
ESPAÑOL | NEDERLANDS | DANSK | NORSK | SUOMI | SVENSKA

## Warranty form

Thank you for purchasing a ZyXEL product! We take great pride in our quality, value and performance and believe that this product should offer you trouble-free operation throughout its lifetime. If you do experience any problems with your product, please contact ZyXEL Communications Corporation offices worldwide. For further information on our warranty regulations and liability in your country please visit the ZyXEL web site: <http://www.zyxel.com/warranty>

In certain countries, the seller has to fill out, sign and stamp the following warranty information in order for the ZyXEL warranty to be valid.

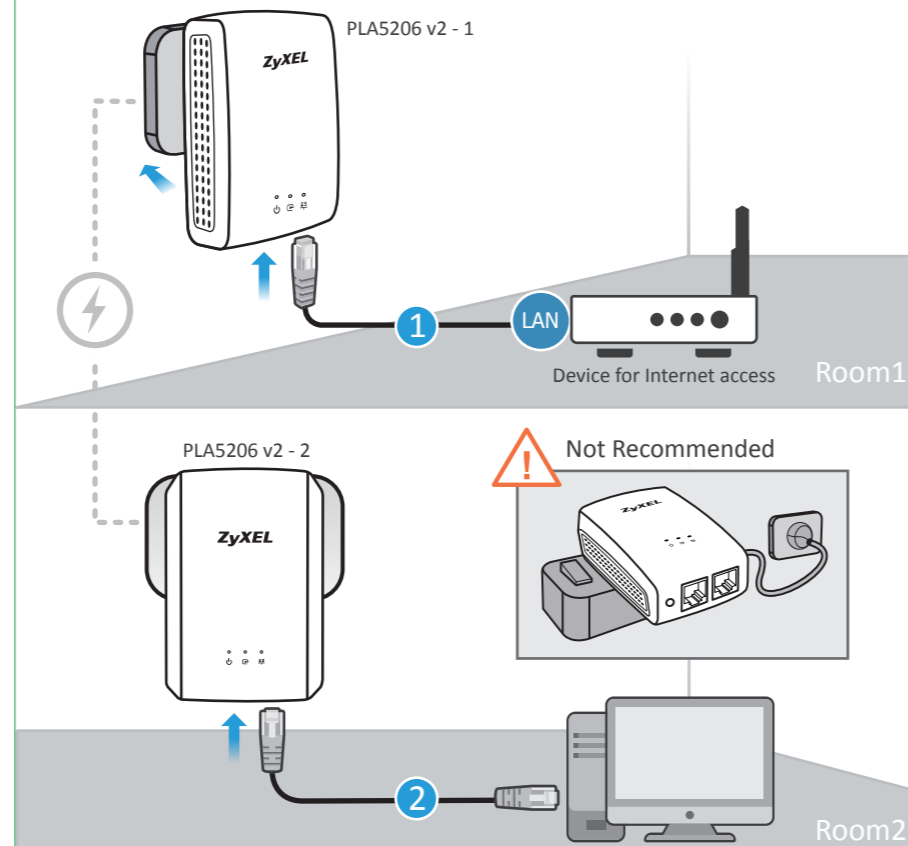
Product model number

Product serial number

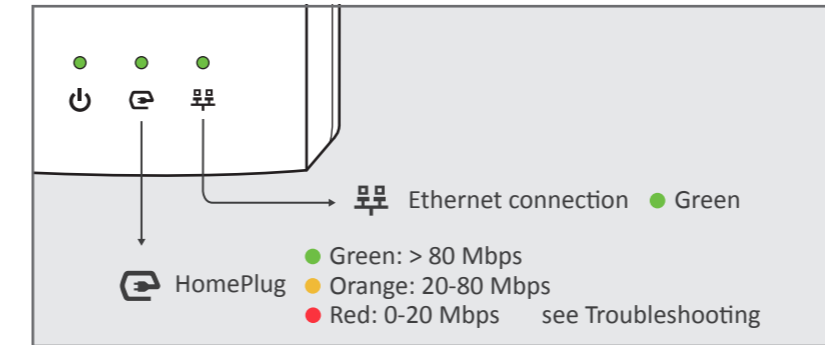
Date of purchase

Seller's stamp and signature

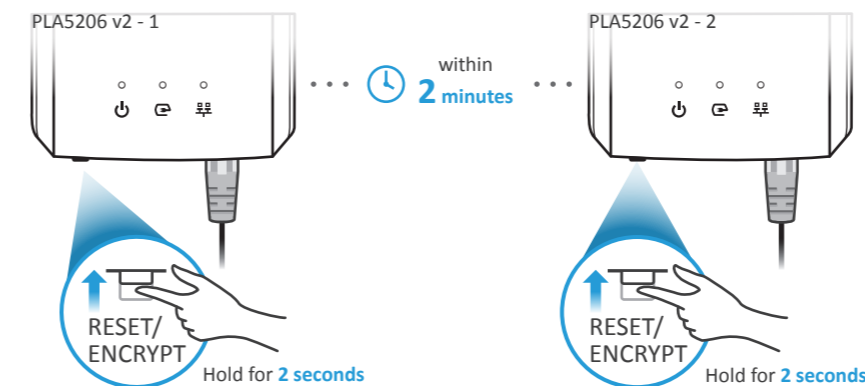
## A Hardware Installation



## B Check LED Lights



## More Secure (Optional)



- EN **A** Connect one PLA to a device for Internet access and another to a device requiring Internet over Powerline.
- DE **A** Verbinden Sie unseren PowerLine Adapter (PLA) mit einem Gerät für den Internetzugang und einen anderen mit einem Gerät, das Internet über Powerline bezieht.
- FR **A** Connecter une PLA à un appareil pour l'accès internet et une autre pour un appareil passant par une ligne électrique pour internet.
- IT **A** Connettere uno dei PLA al router con accesso ad Internet, e l'altro al dispositivo che necessita di accesso a Internet tramite Powerline.
- ES **A** Conecte un PLA a un dispositivo para acceso a Internet y otro a un dispositivo que necesite Internet por línea eléctrica.
- NL **A** Sluit een PLA aan op een apparaat voor internettoegang en een andere op een apparaat met internet via Powerline.
- DK **A** Tilslut en PLA til en enhed for internetadgang og en anden til en enhed der kræver internet over lysnettet.
- NO **A** Koble en PLA til en enhet for Internett-tilgang, og en annen til en enhet som skal ha Internett over strømmnettet.
- FI **A** Liitä yksi PLA-sovitin laitteeseen, joka on liitetty Internetiin, ja toinen PLA-sovitin laitteeseen, jonka haluat liittää Internetiin Powerline-yhteyden kautta.
- SE **A** Anslut en PLA till en enhet för Internetåtkomst och en annan till en enhet som kräver Internet via Powerline.

- EN **B** The HomePlug light indicates how good your Powerline connection is.  
**More Secure (Optional)**  
The PLAs must have an Ethernet connection to use the RESET/ENCRYPT button.
- DE **B** Das HomePlug-Licht zeigt an, wie gut die Powerline-Verbindung ist.  
**Mehr Sicherheit (optional)**  
Der PowerLine Adapter (PLA) benötigt eine Ethernet-Verbindung, um den RESET/VERSCHLÜSSELUNGS-Knopf nutzen zu können.
- FR **B** La lumière HomePlug indique la qualité de votre connexion électrique.  
**Plus de Sécurité (option)**  
Les PLAs doivent avoir une connexion Ethernet pour pouvoir utiliser le bouton RESET/ENCRYPT
- IT **B** Il led HomePlug indica la qualità della connessione tramite Powerline.  
**Più sicuro (Opzionale)**  
I PLA devono avere una connessione Ethernet per poter usare il pulsante RESET/ENCRYPT
- ES **B** La luz HomePlug indica la calidad de la conexión de su línea eléctrica.  
**Más seguro (opcional)**  
Los PLAs debe tener una conexión Ethernet para usar el botón RESET/ENCRYPT.
- NL **B** Het HomePlug lampje geeft aan hoe goed uw Powerline aansluiting is.  
**Veiliger (Optioneel)**  
De PLA's dienen een Ethernetaansluiting te hebben om de RESET/ENCRYPT-toets te gebruiken.
- DK **B** HomePlug-lyset viser hvor god din forbindelse, via lysnettet, er.  
**Mere sikker (Valgfri)**  
PLA'er skal have en Ethernet-forbindelse for at bruge RESET/ENCRYPT-knappen (NULSTILLING/KRTPTERING).
- NO **B** HomePlug-lampen angir hvor god strømnettetforbindelsen er.  
**Mer sikker (valgfritt)**  
PLA-ene må ha en Ethernet-tilkobling for å bruke RESET/ENCRYPT-knappen.
- FI **B** HomePlug-merkkivalo ilmaisee, kuinka hyvä Powerline-yhteys on.  
**Lisäturva (valinnainen)**  
PLA-sovittimien välillä on oltava Ethernet-yhteys, jotta RESET/ENCRYPT-painike on käytettävissä.
- SE **B** HomePlug-lampan indikerar hur bra din Powerline-anslutning är.  
**Säkrare (tillval)**  
PLA:er måste ha en Ethernet-anslutning för att använda knappen RESET/ENCRYPT.

## Troubleshooting

- If a power or Ethernet light does not come on, please check the cable connections and make sure the PLA is turned on.
- If the PLA is connected to an Ethernet switch or router, make sure that the switch or router is working correctly.
- If the HomePlug light does not turn on, it means you do not have a Powerline connection. Make sure that the PLAs are on the same power circuit. Test by connecting PLAs into nearby outlets. Make sure that you do not have a power meter between them.
- To minimize interference, move PLAs away from large electrical devices such as refrigerators or air-conditioners and devices which produce radio waves such as electrical insect killers.
- See the User's Guide for more troubleshooting and for how to use the ZyXEL PLA Series Configuration utility to manage all PLAs on your Powerline network(s).

## More Gadgets...



### ONE Connect

An easy tool to manage, monitor network map and sync Wi-Fi settings for your ZyXEL network devices all from your mobile.



See the User's Guide at [www.zyxel.com](http://www.zyxel.com) for more information, including customer support and safety warnings.

### EU Importer

ZyXEL Communication A/S  
Generatorvej 8D, 2860 Søborg, Denmark.  
<http://www.zyxel.dk>

### US Importer

ZyXEL Communications, Inc  
1130 North Miller Street Anaheim, CA 92806-2001  
<http://www.us.zyxel.com>

# Quick Start Guide

**PLA5206 v2**  
1000 Mbps Powerline 2-port Gigabit Ethernet Adapter



**ZyXEL**

ENGLISH | ČEŠTINA | MAGYAR | ROMÂNĂ | POLSKI  
SLOVENŠČINA | SLOVENČINA | БЪЛГАРСКИ | ภาษาไทย | 繁體中文

## Warranty form

Thank you for purchasing a ZyXEL product! We take great pride in our quality, value and performance and believe that this product should offer you trouble-free operation throughout its lifetime. If you do experience any problems with your product, please contact ZyXEL Communications Corporation offices worldwide. For further information on our warranty regulations and liability in your country please visit the ZyXEL web site: <http://www.zyxel.com/warranty>

In certain countries, the seller has to fill out, sign and stamp the following warranty information in order for the ZyXEL warranty to be valid.

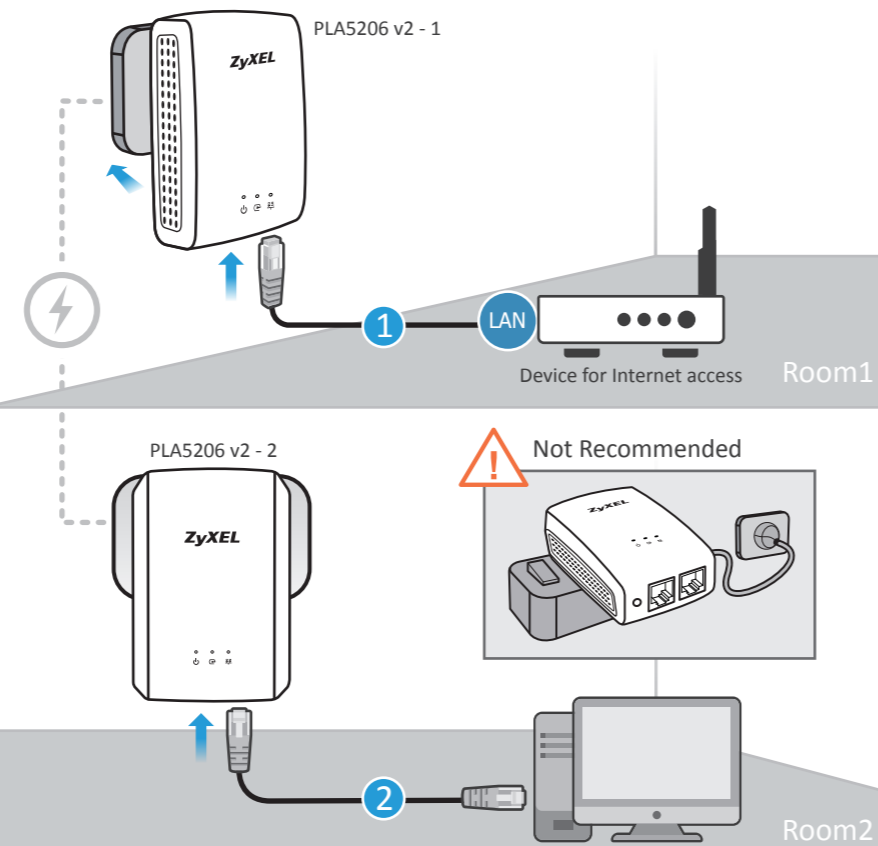
Product model number

Product serial number

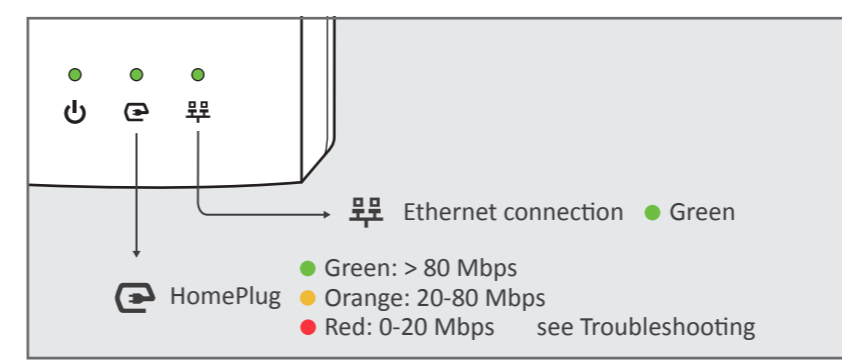
Date of purchase

Seller's stamp and signature

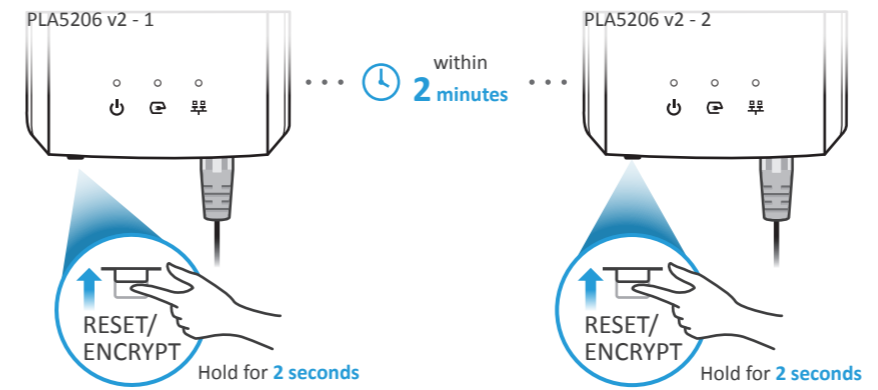
## A Hardware Installation



## B Check LED Lights



## More Secure (Optional)



- EN **A** Connect one PLA to a device for Internet access and another to a device requiring Internet over Powerline.
- CZ **A** Jeden adaptér PLA připojte do zařízení, které má mít přístup k internetu, a další do zařízení, které vyžaduje internet prostřednictvím adaptéru Powerline.
- HU **A** Csatlakoztasson egy PLA-t interneteléréssel rendelkező eszközökhöz, majd csatlakoztasson hozzá egy készülékhez, aminek internetelérésre van szüksége.
- RO **A** Conectați un adaptor de rețea electrică la un dispozitiv pentru acces la internet și un altul la un dispozitiv care necesită internet prin rețeaua electrică.
- PL **A** Podłącz jedno PLA do urządzenia zapewniającego dostęp do Internetu, a drugie do urządzenia wymagającego dostępu do Internetu przez linię energetyczną.
- SL **A** Povežite en vmesnik PLA na napravo za internetni dostop in drug vmesnik PLA na napravo, ki poveže internetni dostop prek napajalnega voda.
- SK **A** Pripojte jedno zariadenie s adaptérom pre elektrickú sieť k zariadeniu na získanie prístupu do internetu a druhé k zariadeniu, ktoré vyžaduje internet cez elektrickú sieť.
- BG **A** Свържете един PLA към устройство с интернет достъп и друг към устройство, изискващо интернет достъп по захранваща линия.
- TH **A** เชื่อมต่ออะแดปเตอร์ไปยังอุปกรณ์สำหรับการเข้าถึงอินเทอร์เน็ตและอื่น ๆ ไปยังอุปกรณ์ที่ต้องใช้อินเทอร์เน็ตผ่านสายไฟฟ้า
- TW **A** 請將其中一個 PLA 連接到裝置以存取網際網路，並將另一個連接到需要透過電力線存取網際網路的裝置。

- EN **B** The HomePlug light indicates how good your Powerline connection is.  
**More Secure (Optional)**  
The PLAs must have an Ethernet connection to use the RESET/ENCRYPT button.
- CZ **B** Světelný indikátor HomePlug označuje, jak kvalitní je připojení Powerline.  
**Bezpečnější (volitelné)**  
Chcete-li používat tlačítko RESET/ENCRYPT, musí být adaptéry PLA připojeny k síti Ethernet.
- HU **B** A HomePlug fény jelzi, milyen jó a Powerline kapcsolat.  
**Biztonságosabb (opcionális)**  
A PLA-knak rendelkezniük kell Ethernet kapcsolattal az ÚJRAINDÍTÁS/TITKOSÍTÁS gomb használatához.
- RO **B** Lumina HomePlug indică nivelul conexiunii rețelei dvs. electrice.  
**Mai multă siguranță (opțional)**  
Adaptoarele de rețea electrică trebuie să aibă conexiune Ethernet pentru a utiliza butonul RESETARE/CRIPTARE.
- PL **B** Światelko na wtyczce wskazuje na jakość połączenia przez linię energetyczną.  
**Bezpieczniejsze (opcjonalne)**  
PLA wymagają połączenia Ethernet, aby skorzystać z przycisku RESETUJ/SZYFRUJ.
- SL **B** Svetilka HomePlug označi, kako dobra je povezava prek napajalnega voda.  
**Bolj varno (neobvezno)**  
Gumb RESET/ENCRYPT (ponastavi/kodiraj) deluje, če ima PLA eternetno povezavo.
- SK **B** Indikátor na domovej zástrčke indikuje kvalitu pripojenia cez elektrickú sieť.  
**Lejšie zabezpečenie (voliteľné)**  
Zariadenia s adaptérom pre elektrickú sieť musia mať Eternetové pripojenie, aby sa dalo používať tlačidlo RESET/ENCRYPT (Resetovať/Šifrovať).
- BG **B** ЛАМПАТА НОМЕПЛУГ ПОКАЗВА КОЛКО ДОБРА Е ВАШАТА ВРЪЗКА ПО ЗАХРАНВАЩА ЛИНИЯ.  
**ПО-БЕЗОПАСЕН (ОПЦИЯ)**  
PLA ТРЯБВА ДА ИМАТ ETHERNET ВРЪЗКА, ЗА ДА ИЗПОЛЗВАТЕ БУТОНА RESET/ENCRYPT.
- TH **B** แสง HomePlug จะแสดงให้เห็นว่าการเชื่อมต่อสายไฟฟ้าของคุณดีขนาดไหน  
**ความปลอดภัยยิ่งขึ้น (ถ้ามี)**  
อะแดปเตอร์จะต้องมีการเชื่อมต่ออีเธอร์เน็ตเพื่อใช้ปุ่ม RESET/ENCRYPT
- TW **B** HomePlug 指示燈顯示電力線的連接狀態。  
**提高安全性 (選擇性)**  
PLA 必須連上乙太網路才能使用 RESET/ENCRYPT 按鈕。

## Troubleshooting

- If a power or Ethernet light does not come on, please check the cable connections and make sure the PLA is turned on.
- If the PLA is connected to an Ethernet switch or router, make sure that the switch or router is working correctly.
- If the HomePlug light does not turn on, it means you do not have a Powerline connection. Make sure that the PLAs are on the same power circuit. Test by connecting PLAs into nearby outlets. Make sure that you do not have a power meter between them.
- To minimize interference, move PLAs away from large electrical devices such as refrigerators or air-conditioners and devices which produce radio waves such as electrical insect killers.
- See the User's Guide for more troubleshooting and for how to use the ZyXEL PLA Series Configuration utility to manage all PLAs on your Powerline network(s).

## More Gadgets...



**ONE Connect**  
An easy tool to manage, monitor network map and sync Wi-Fi settings for your ZyXEL network devices all from your mobile.



See the User's Guide at [www.zyxel.com](http://www.zyxel.com) for more information, including customer support and safety warnings.

EU Importer  
ZyXEL Communication A/S  
Generatorvej 8D, 2860 Søborg, Denmark.  
<http://www.zyxel.dk>

US Importer  
ZyXEL Communications, Inc  
1130 North Miller Street Anaheim, CA 92806-2001  
<http://www.us.zyxel.com>