

Login to device

1. To enter router's Web interface type <http://192.168.1.1> in your internet browser.
2. Use the following parameters when prompted for authentication:
User name: **admin**
Password: **admin01**

Authorization Required

Please enter your username and password.

Username	<input type="text" value="admin"/>
Password	<input type="password" value="*****"/>
<input type="button" value="Login"/>	

3. **Configuration Wizard** will start after logging in. It is necessary to complete **Configuration Wizard** to setup router to correct mode. You can leave default settings but it is strongly recommended that you change the password and enable **Wireless Security**.

4. Go to **Status > Network Information** and pay attention to **Signal Strength**. To maximize the performance try adjusting antennas or changing location of your device to achieve best signal conditions.

Mobile | WAN | LAN | Wireless | OpenVPN

Mobile Information

Mobile	
Data connection state	Connected
IMEI	860461024004296
Sim card state	OK
Signal strength	-44 dBm

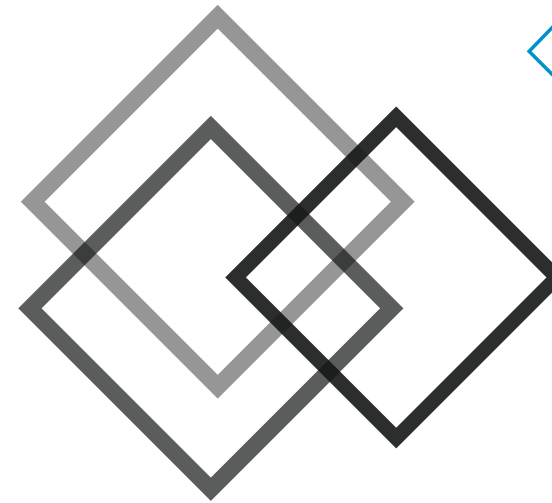


This sign on the package means that it is necessary to read the User's Manual before you start using the device.

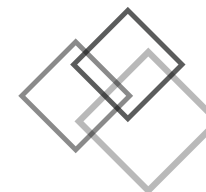


This sign on the package means that all used electronic and electric equipment should not be mixed with general household waste.

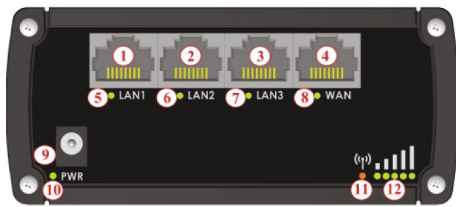
Please visit our web site www.teltonika.lt for more information



RUT900 HSPA+ Router

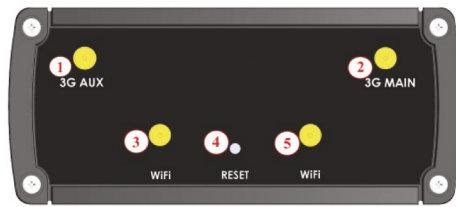


Front panel



- 1, 2, 3 LAN Ethernet ports
- 4 WAN Ethernet port
- 5, 6, 7 LAN LEDs
- 8 WAN LED
- 9 Power socket
- 10 Power LED
- 11 GSM connection status LED
- 12 GSM signal strength indication LEDs

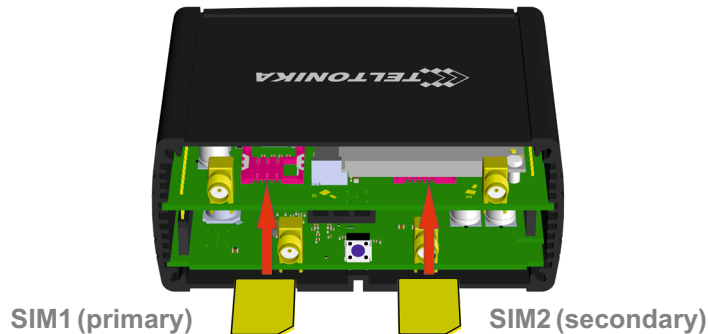
Back panel



- 1 3G auxiliary antenna connector
- 2 3G main antenna connector
- 3, 5 WiFi antenna connectors
- 4 Reset button

Hardware installation

1. Remove back panel and insert SIM cards which were given by your ISP (Internet Service Provider). Correct SIM cards' orientation is shown in the picture.



2. Attach 3G and WiFi antennas.

3. Connect the power adapter to the socket on the front panel of the device. Then plug the other end of the power adapter in to a wall outlet or power strip.

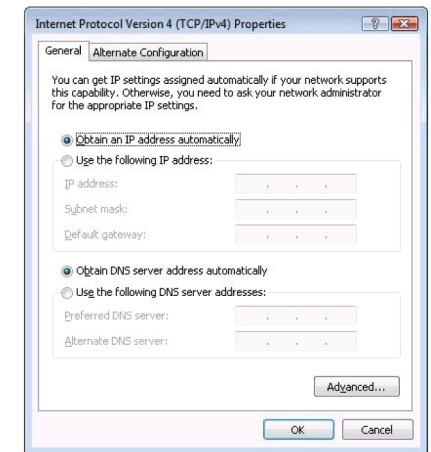
4. Connect to the device wirelessly (SSID: **Teltonika_Router**) or use Ethernet cable and plug it in to any LAN Ethernet port.

Configure your computer (using Windows 7)

1. Enable the wireless network connection (go to **Start > Control Panel > Network and Internet > Network and Sharing Center**. In the left panel click **Change adapter settings** link. Right click on **Wireless Network Connection** and select **Enable**).

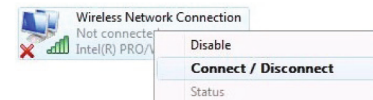


2. Setup wireless network adapter on your computer (right click on **Wireless Network Connection** and select **Properties**. After that select **Internet Protocol Version 4 (TCP/IP)** and click **Properties**).



3. Select **Obtain IP address automatically** and **Obtain DNS server address automatically** if they are not selected. Click **OK**.

4. Right click on **Wireless Network Connection** and select **Connect/Disconnect** to see available wireless networks.



5. Choose the wireless network **Teltonika_Router** from the list and click **Connect**.

