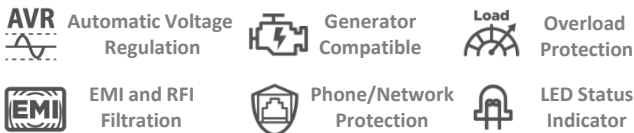


UT650/850/1050E

UT Series

Fire-resistant UPS with The Most Durable Capability For Protection



The UT Series provides reliable battery backup for home and office appliances while featured data line protection safeguards phones, faxes, Ethernet devices, and other communication equipment from AC transients and other power irregularities.

With CyberPower's innovative Battery Management Technology, the UPS significantly optimizes the charging process and battery performance. The configurable alarm allows users to switch ON/OFF the audible alarm when UPS is on battery mode to avoid any disturbance. Its generator compatibility also provides an extensive application scenario during a power outage.

With the built-in Automatic Voltage Regulation (AVR) stabilizing the AC power and maintaining a safe voltage, the UPS ensures safe power levels through Boost and Buck function for the connected equipment without resorting to battery power.

APPLICATIONS

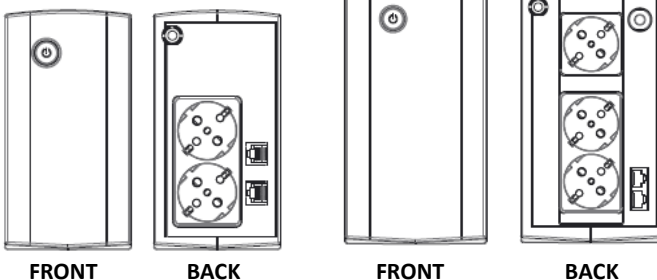
- Home and Home Office
- Small Office

SERIES FEATURES

- Automatic Voltage Regulation (AVR)
- Generator Compatible
- Phone/Fax/Modem/DSL/Network Protection
- Overload Protection
- Auto-restart/Auto-charge
- LED Status Indicator
- Fire-resistant Capability
- Configurable Alarm
- Battery Management Technology
- Compact Size

UT650/850E

UT1050E



FRONT

BACK

FRONT

BACK



Automatic Voltage Regulation

Automatic Voltage Regulation provides clean, consistent AC power by automatically regulating low voltages and over voltages, within defined tolerances, when incoming utility power has minor fluctuations.



FIRE-RESISTANT CAPABILITY

CyberPower adopts the best-in-class plastics in the industry. The outstanding fire resistant capability minimizes the possible damage of your valuable assets in case of any fire incident.



TECHNICAL SPECIFICATIONS

Model Name	UT650E-DE	UT850E-DE	UT1050E-DE
General			
UPS Topology	Line-interactive	Line-interactive	Line-interactive
Input			
Generator Compatibility	Yes	Yes	Yes
Nominal Input Voltage	230Vac ± 10%	230Vac ± 10%	230Vac ± 10%
Input Voltage Range	165 - 290Vac	165 - 290Vac	165 - 290Vac
Input Frequency Range	50/60Hz ± 5 (Auto-sensing)	50/60Hz ± 5 (Auto-sensing)	50/60Hz ± 5 (Auto-sensing)
Rated Input Current	2.95A	3.86A	4.77A
Plug Type	Schuko	Schuko	Schuko
Output			
VA/Watts	650/360	850/425	1050/630
On Battery Waveform	Simulated Sine Wave	Simulated Sine Wave	Simulated Sine Wave
On Battery Voltage	230Vac ± 10%	230Vac ± 10%	230Vac ± 10%
On Battery Frequency	50/60Hz ± 1%	50/60Hz ± 1%	50/60Hz ± 1%
Automatic Voltage Regulation (AVR)	Single Boost, Single Buck	Single Boost, Single Buck	Single Boost, Single Buck
Overload Protection	Fuse	Fuse	Circuit Breaker
Outlets - Total	2	2	3
Outlet Type	Schuko x 2	Schuko x 2	Schuko x 3
Outlets - Battery Backup	2	2	3
Typical Transfer Time	4ms	4ms	4ms
Battery			
Runtime at 60W (min)	28	30	65
Runtime at 90W (min)	16	20	43
Battery Type	Sealed Lead-acid	Sealed Lead-acid	Sealed Lead-acid
User Replaceable	No	No	No
Typical Recharge Time	8 Hours	8 Hours	8 Hours
Surge Protection & Filtering			
EMI/RFI Filtration	Yes	Yes	Yes
Phone / Network Protection RJ11/RJ45	1-in, 1-out	1-in, 1-out	1-in, 1-out
Management & Communications			
LED Indicators	Power On, Line Mode, Battery Mode, Low Battery		
Audible Alarms	Battery Mode, Low Battery, Overload, UPS Fault		
Physical			
Form Factor	Tower	Tower	Tower
Physical - UPS Module			
Dimensions (WxHxD) (mm.)	84 x 159 x 252	84 x 159 x 252	100 x 189 x 325
Weight (kg.)	3.8	4.2	6.9
Environmental			
Operating Temperature	32 °F to 104 °F / 0 °C to 40 °C	32 °F to 104 °F / 0 °C to 40 °C	32 °F to 104 °F / 0 °C to 40 °C
Operating Humidity	0% - 90% Non-condensing	0% - 90% Non-condensing	0% - 90% Non-condensing
Operating Elevation	0-10,000 feet (0-3,000 meters)	0-10,000 feet (0-3,000 meters)	0-10,000 feet (0-3,000 meters)
Storage Temperature	- 4 °F to 122 °F / -20 °C to 50 °C	- 4 °F to 122 °F / -20 °C to 50 °C	- 4 °F to 122 °F / -20 °C to 50 °C
Storage Relative Humidity	0% - 90% Non-condensing	0% - 90% Non-condensing	0% - 90% Non-condensing
Online Thermal Dissipation	40 BTU/hr	40 BTU/hr	45 BTU/hr
Certifications			
Certifications	CE	CE	CE
ROHS	Yes	Yes	Yes

#All specifications are subject to change without notice. ©2016 Cyber Power Systems, Inc. All Trademarks are the property of their owners.

